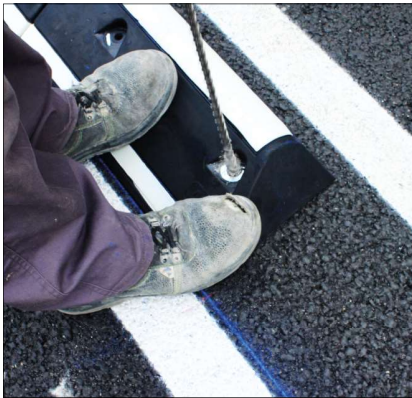


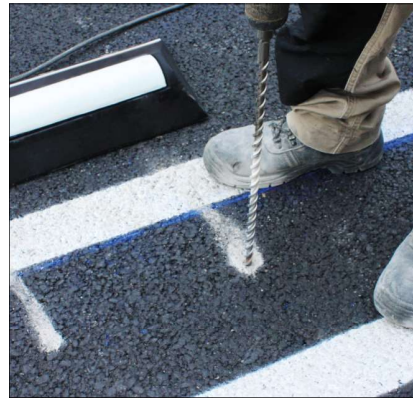


INSTRUCTIONS

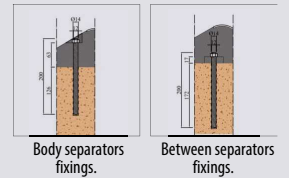
MOMPE CYCLE LANE SEPARATOR



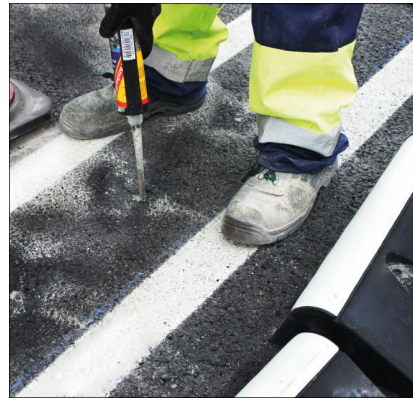
1. Place the separator in the correct spot.



2. Drill with a Ø14 bit to the indicated depth in each one of the fixing holes.



3. Remove the separator and clean the holes of waste.



4. Fill more or less 2/3 of the holes with resin. Ref. RS400



5. Place the separator with the threaded rods and nuts. Ref. MOMPETOR



6. Wait until the resin is dry and adjust the separator with the nut.



www.adourbanfurniture.com

+34 93 116 29 75 (International) | +34 93 456 03 03 (Spanish)

info@adourbanfurniture.com