



Recycled material



Optional front opening in stainless steel with personal logo.

**Drop urban plastic drinking fountain** made of recycled thermoplastic polymer and stainless steel tap fixing plate.

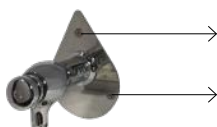
100% recyclable UV treated material that requires little maintenance. High resistance to impact, wear and inclement weather.

Chrome-plated steel tap with a push-button system (included).



### Advantages:

- Vandal-resistant security screws to prevent drinking fountain's accessories from being stolen (tap, tap fixing plate, etc....).

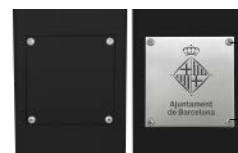


Vandal-resistant security screws

- Not painted. Hardly oxidized. Little maintenance needed
- Limited flexibility.
- The Tap and tap's fixing plate are interchangeable with other of our drinking fountain models
- Fixing plate installation by means of metal plugs

### Optional:

- Front or rear opening for possible repairs. Customisable in stainless steel with a logo or text decoration of the City Hall.



Opening can be customised in lacquered or stainless steel



Vandal-resistant security screws

- Customisation with the City Hall logo or coat of arms.



# URBAN DRINKING FOUNTAIN

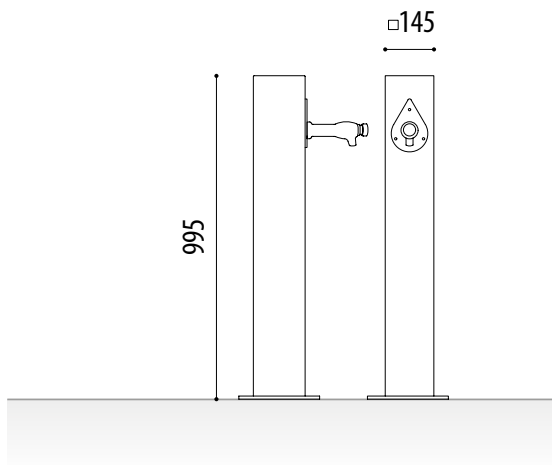
## DROP

### MEASURES:

Width: 145x145 mm.

Visible / total height: 995 mm.

Bottom plate: 210x210 mm.

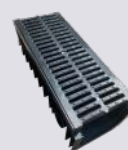


### STANDARD FINISHES:

Color black .....Ref. FDR0P01

### GRATE (OPTIONAL):

Set consisting of two plastic pieces: a channel (lower part) and a grate (top part).



REF. RFP01

### NOT INCLUDED:

- Drain grate.
- Fixing plugs.