



Prefabricated rubber Berlin cushion for urban roads. The cushion is an elevation implanted in the middle of the road that constitutes an obstacle depending on the distance of the wheels of the same axle of the vehicle that allows buses and other heavy vehicles not to be affected by it, since the separation between wheels is wider than the height of the Berlin cushion.

All parts are made of vulcanized rubber, red.

It consists of white vulcanized rubber triangles, to achieve greater resistance to the passage of vehicles, thus avoiding premature wear.

Being a modular system, we can adapt these to the measurements required by the work.

Berlines cushion of 2250x1800 mm.

Set consisting of 2 central pieces and 4 end pieces.
900x750x65 mm each piece.

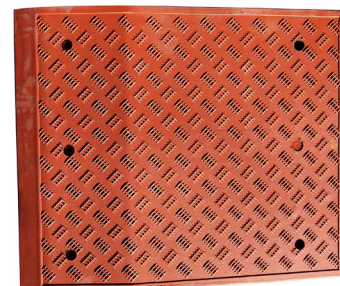
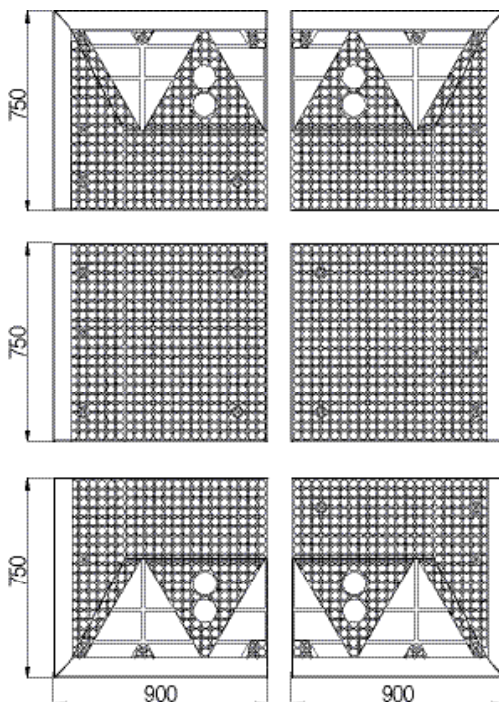
Ref.TEMIT1800X2250

Berlines cushion of 3000x1800 mm.

Set consisting of 4 central pieces and 4 end pieces.
900x750x65 mm each piece.

Ref.TEMIT1800X3000

MODULE MEASUREMENTS:



Center piece:
900x750x65 mm



End piece:
900x750x65 mm



BERLINES CUSHION

TEMIT



FIXATION:

Fixing the Berlin cushions using an installation accessory kit that includes several fixing pieces between pieces, screws (T10X160, Ø14 nylon plug) and red plugs included. Easy installation.

It consists of white vulcanized rubber triangles, to achieve greater resistance to the passage of vehicles, thus avoiding premature wear.



 www.adourbanfurniture.com

 +34 93 116 29 75 (International) | +34 93 456 03 03 (Spanish)

 info@adourbanfurniture.com